

Dresden, June 14, 2023

PRESS RELEASE

[New PACKWISE SMART CAP Ex now available for use in hazardous locations](#)

The Packwise solution can now also be used in potentially explosive environments. For Packwise customers, the new development means an important expansion of the Packwise solution's field of application. For a large part of the possible applications of the Packwise Smart Cap, explosion protection is essential. By meeting the explosion protection requirements, Packwise strengthens its position as a market leader and innovator in sustainable supply chain optimization.

Packwise GmbH, the leading provider of intelligent tracking solutions for mobile liquid containers, continues to focus on the needs of the chemical and food industries with the development of Packwise Smart Cap Ex and further extends its market leadership. Relevant industries with hazardous areas include the production and distribution of solvents, paints and varnishes, and the petrochemical industry.

[Advanced features for comprehensive applicability of the Packwise solution](#)

The ATEX/IECEX version of the Packwise Smart Cap - designed, approved and manufactured in Germany - offers the same features and mounting as the previous version, which has been field proven with millions of measurements. In addition, the hardware is combined with the highly intelligent Packwise Flow platform for supply chain visibility and automation.

The new version is equipped with a specially developed antenna to further improve connectivity, integrates an optimized power concept and is also equipped with an additional barcode and a more readable QR code. Even with these improvements, Packwise has managed to keep the price/performance ratio interesting and offer an attractive price. As a result, Packwise is able to support its customers in rolling out the solution to entire container fleets, rather than being limited to niche applications.

Customers are responding enthusiastically. "With the introduction of Packwise Smart Cap Ex, the topic of automated tracking of IBCs reaches a new dimension. Explosion protection is mandatory for the majority of our products and Packwise's new development is an important milestone for a comprehensive implementation," says Markus Hofmann, Head of Supply Chain Excellence & Digitization - Dispersions Europe, BASF SE.

[Development challenges](#)

The development of the PACKWISE SMART CAP Ex presented the team with a number of technical challenges, mainly due to the combination of the requirements of battery operation,

mobile radio use and a very high level of device protection. A special combination of intrinsic safety and potting allows the use of multiple radio technologies.

Packwise holds all relevant certificates

Packwise is certified according to DIN EN ISO/IEC 80079-43 and maintains a QM system according to ISO 9001. Through the Notified Body "Bureau Veritas Consumer Products Services Germany GmbH", Packwise is officially certified to manufacture products in potentially explosive atmospheres according to ATEX Directive 2014/34/EU, IECEx system and UKCA. The Packwise Smart Cap itself is approved for ATEX/IECEx Zones 1 and 2 (gas and dust) and Zones 21 and 22. US approval for the Packwise Smart Cap Ex is targeted for Q4 2023.

Felix Weger, Co-Founder, Innovation and Business Development, Packwise GmbH: "We are very excited to enable our customers to experience the added value of the Packwise solution with our new ATEX/IECEx solution. The added value for customers is mainly in the reduction of organizational and logistical costs, the increase of revenue potential through new service models and the implementation of sustainable transport container logistics."

The ATEX/IECEx approved **Packwise Smart Cap Ex** is available now. For more information on the hardware and the Packwise solution, please visit the company's official website (www.packwise.io).

Contact details

Gesche Weger
CEO Packwise GmbH

Phone: +49 (0) 351 896 750 90
Email: gesche.weger@packwise.io
Packwise GmbH
Antonstr. 25
D-01097 Dresden

About Packwise

Packwise GmbH is a technology company based in Dresden, Germany, whose innovative Industrial IoT solution enables customers in the chemical, pharmaceutical and food industries to gain transparency along the supply chain. Our solution, consisting of the plug-and-play sensor Packwise Smart Cap and the associated platform Packwise Flow, provides unprecedented insight into relevant data along the supply chain. For different types of liquid containers, sensor data on location, level and movement is collected with high accuracy in real time and visualized and analyzed in Packwise Flow in a fully automated and intelligent way. Packwise customers simultaneously benefit from automated processes, improved service levels to their customers and partners, and more sustainable container logistics. Since 2017, the trio of founders and their

team of around 20 people have been working relentlessly on this technology to transform their customers' supply chains into an intelligent, digital, collaborative network.

www.packwise.io

Images

Image 1: The new Packwise Smart Cap Ex



Credit: Tobias Ritz

Image 2: The Packwise Flow Platform for Supply Chain Visibility and Automation

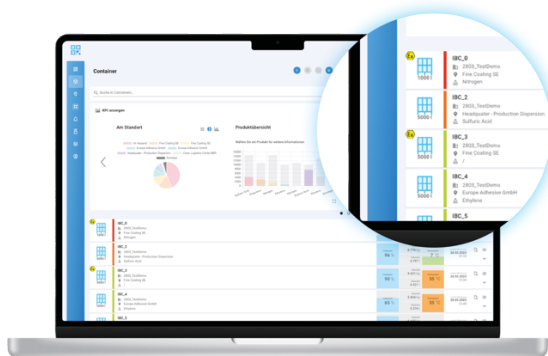


Image 3: The new Packwise Smart Cap Ex in action



Credit: Vanessa Jäkel